

Landing price of tunas 2021 (Main fishing ports in Japan)

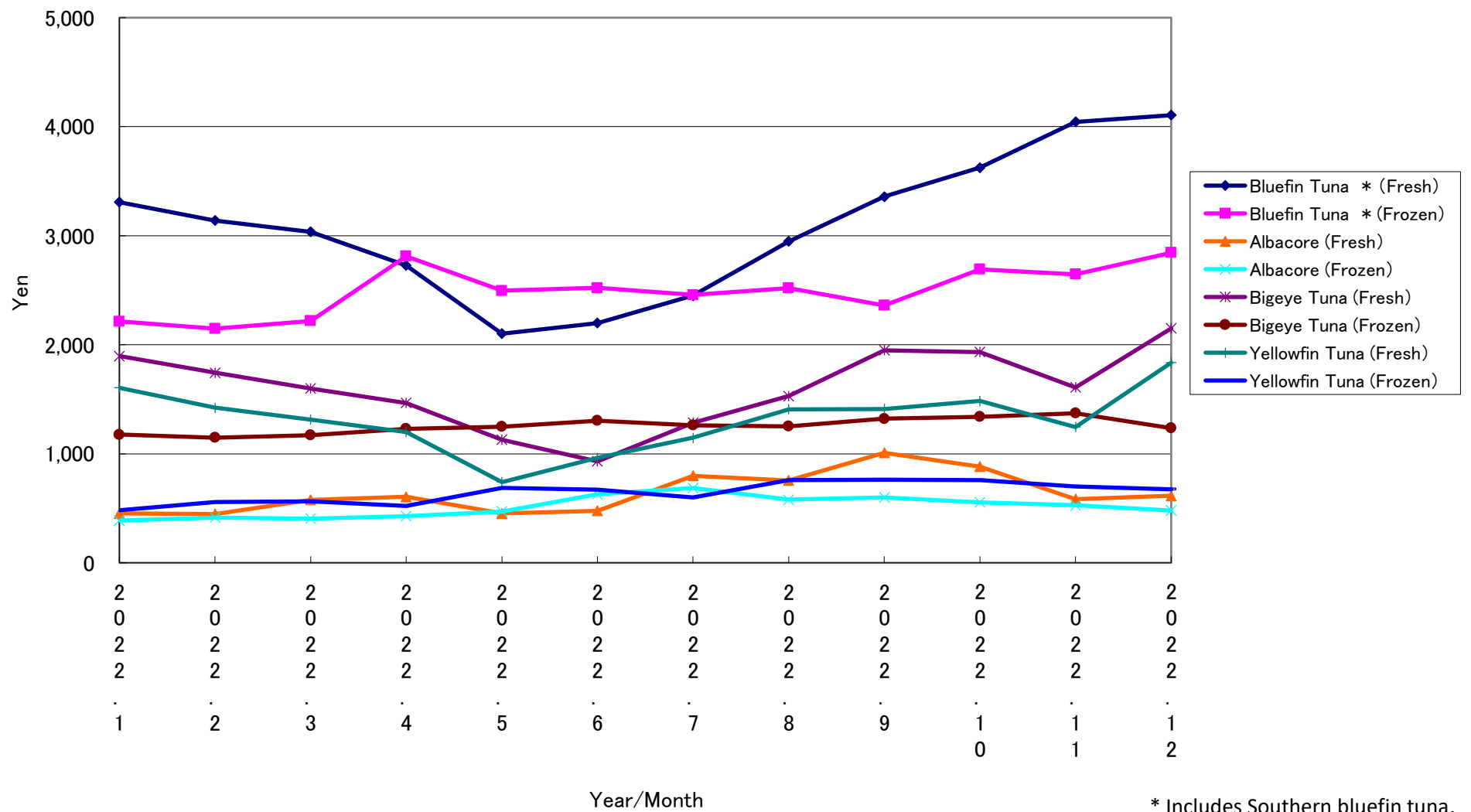
| Year/Month | Bluefin Tuna * | | Albacore | | Bigeye Tuna | | Yellowfin Tuna | |
|------------|----------------|----------|----------|----------|-------------|----------|----------------|----------|
| | (Fresh) | (Frozen) | (Fresh) | (Frozen) | (Fresh) | (Frozen) | (Fresh) | (Frozen) |
| 2022. 1 | 3,309 | 2,213 | 453 | 387 | 1,895 | 1,175 | 1,605 | 482 |
| 2022. 2 | 3,140 | 2,148 | 447 | 415 | 1,743 | 1,147 | 1,422 | 557 |
| 2022. 3 | 3,035 | 2,217 | 578 | 405 | 1,599 | 1,170 | 1,314 | 562 |
| 2022. 4 | 2,727 | 2,812 | 605 | 428 | 1,467 | 1,230 | 1,200 | 520 |
| 2022. 5 | 2,101 | 2,496 | 452 | 470 | 1,130 | 1,248 | 740 | 686 |
| 2022. 6 | 2,198 | 2,521 | 477 | 628 | 930 | 1,303 | 961 | 672 |
| 2022. 7 | 2,450 | 2,456 | 797 | 686 | 1,285 | 1,261 | 1,147 | 599 |
| 2022. 8 | 2,947 | 2,521 | 756 | 579 | 1,529 | 1,252 | 1,408 | 759 |
| 2022. 9 | 3,358 | 2,360 | 1,009 | 599 | 1,950 | 1,321 | 1,410 | 762 |
| 2022. 10 | 3,624 | 2,692 | 882 | 555 | 1,933 | 1,340 | 1,484 | 759 |
| 2022. 11 | 4,043 | 2,647 | 583 | 527 | 1,609 | 1,372 | 1,245 | 701 |
| 2022. 12 | 4,106 | 2,844 | 615 | 479 | 2,150 | 1,234 | 1,835 | 674 |

* Includes Southern bluefin tuna.

Unit: Yen/Kg

Source: Ministry of Agriculture, Forestry and Fisheries of Japan.

Landing price of tunas (Main fishing ports in Japan)



* Includes Southern bluefin tuna.