

Landing price of tunas (Main fishing ports in Japan)

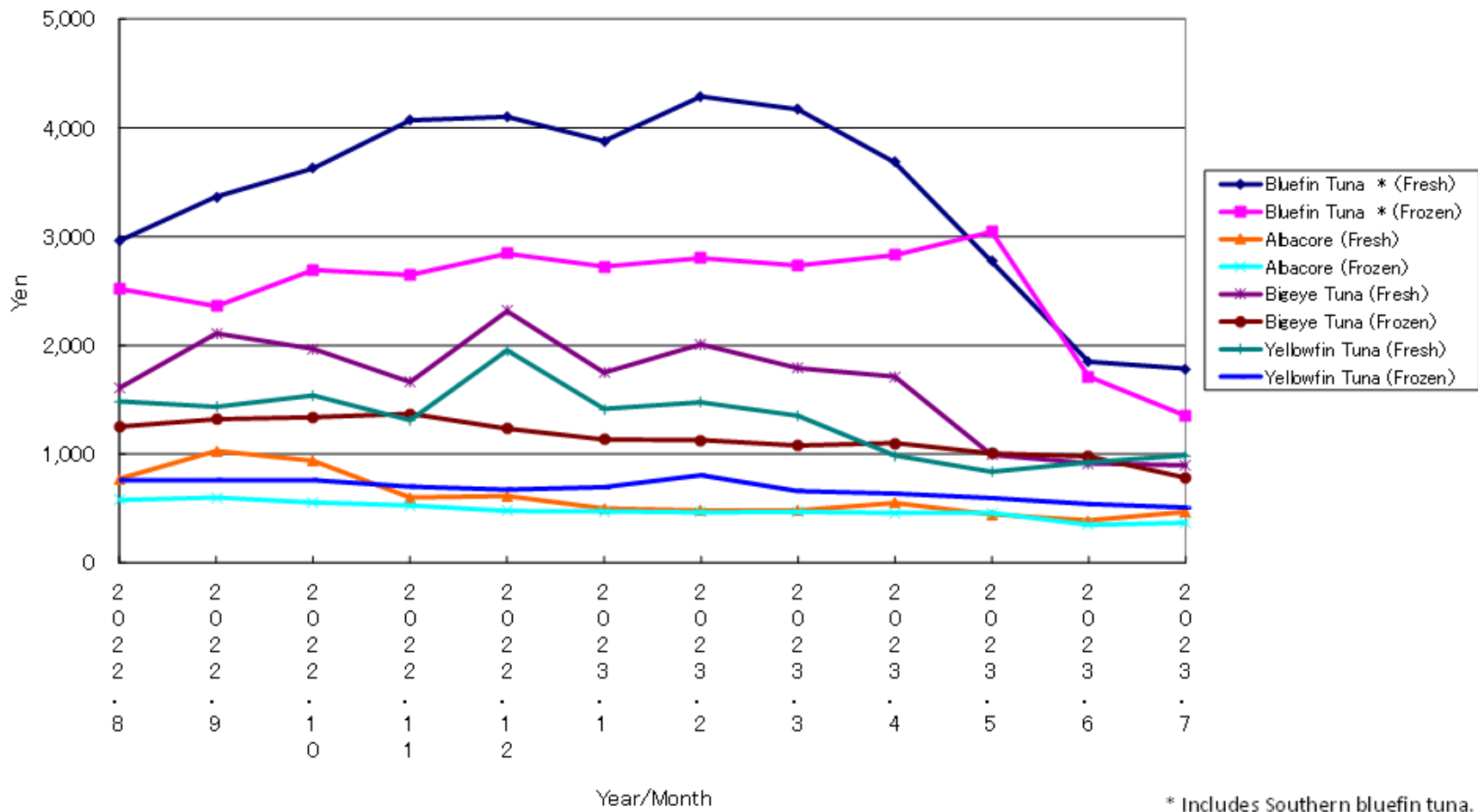
Year/Month	Bluefin Tuna *		Albacore		Bigeye Tuna		Yellowfin Tuna	
	(Fresh)	(Frozen)	(Fresh)	(Frozen)	(Fresh)	(Frozen)	(Fresh)	(Frozen)
2022. 8	2,961	2,521	776	579	1,610	1,252	1,487	759
2022. 9	3,370	2,360	1,031	599	2,108	1,321	1,437	762
2022. 10	3,628	2,692	938	555	1,969	1,340	1,539	759
2022. 11	4,071	2,647	599	527	1,664	1,372	1,312	701
2022. 12	4,103	2,844	616	479	2,317	1,234	1,954	674
2023. 1	3,876	2,726	501	472	1,749	1,134	1,415	697
2023. 2	4,290	2,801	482	466	2,010	1,130	1,474	807
2023. 3	4,171	2,735	484	468	1,791	1,081	1,351	661
2023. 4	3,682	2,828	550	459	1,714	1,104	988	637
2023. 5	2,771	3,044	448	459	994	1,006	840	595
2023. 6	1,852	1,714	392	350	915	979	926	540
2023. 7	1,784	1,353	470	368	899	784	989	510

* Includes Southern bluefin tuna.

Unit: Yen/Kg

Source: Ministry of Agriculture, Forestry and Fisheries of Japan.

Landing price of tunas (Main fishing ports in Japan)



* Includes Southern bluefin tuna.