

## Landing price of tunas 2019 (Main fishing ports in Japan)

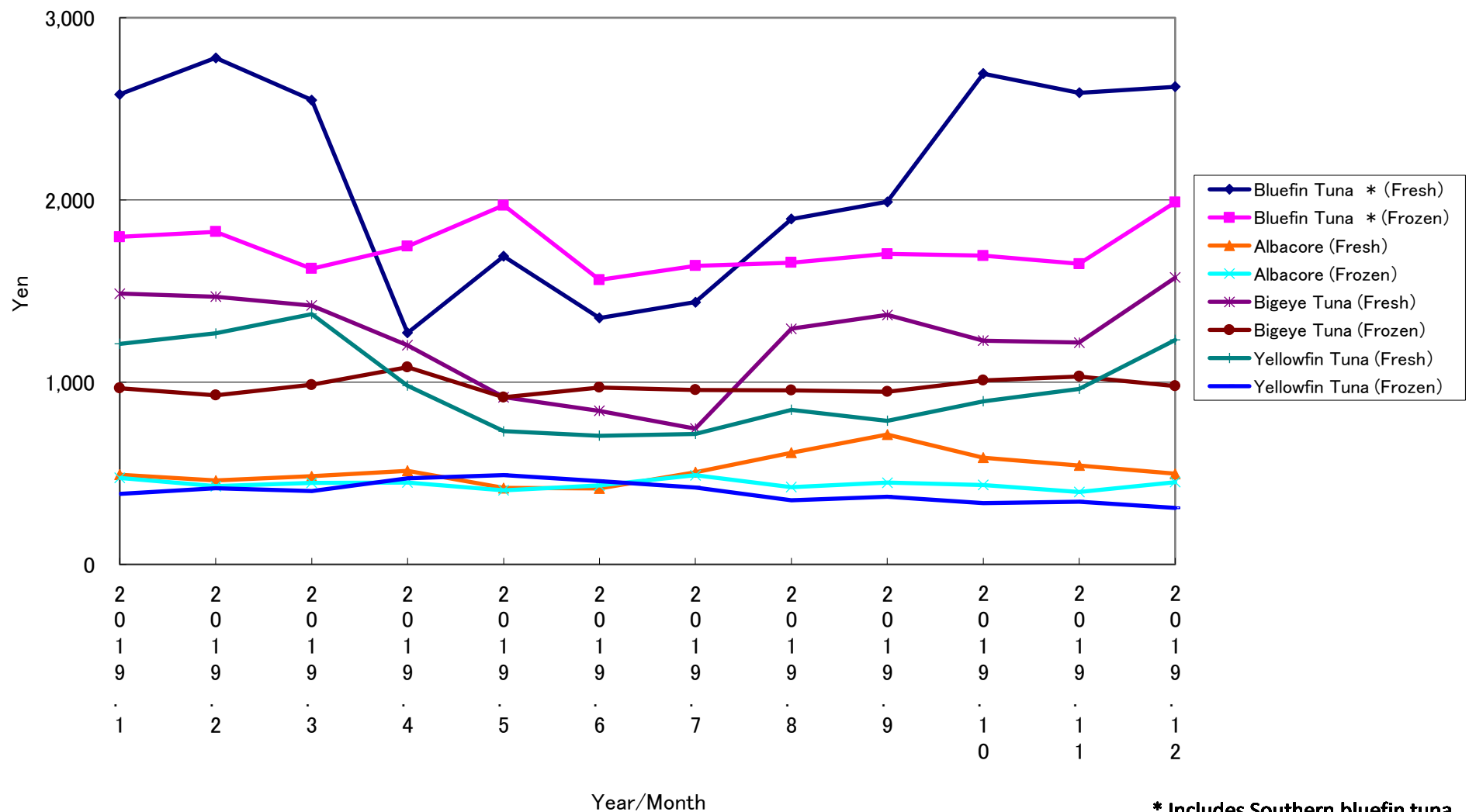
Year/Month	Bluefin Tuna *		Albacore		Bigeye Tuna		Yellowfin Tuna	
	(Fresh)	(Frozen)	(Fresh)	(Frozen)	(Fresh)	(Frozen)	(Fresh)	(Frozen)
2019. 1	2,579	1,797	492	475	1,486	967	1,211	387
2019. 2	2,780	1,825	460	429	1,469	929	1,268	419
2019. 3	2,548	1,623	483	447	1,420	986	1,374	403
2019. 4	1,270	1,746	513	450	1,202	1,082	981	472
2019. 5	1,692	1,970	419	407	917	917	731	490
2019. 6	1,353	1,562	417	433	842	970	706	458
2019. 7	1,439	1,639	506	490	745	957	716	422
2019. 8	1,895	1,655	613	424	1,293	956	849	352
2019. 9	1,990	1,704	713	448	1,369	948	788	371
2019. 10	2,693	1,694	586	436	1,228	1,010	895	336
2019. 11	2,588	1,649	542	397	1,217	1,031	963	345
2019. 12	2,621	1,987	497	452	1,574	979	1,232	310

\* Includes Southern bluefin tuna.

Unit: Yen/Kg

Source: Ministry of Agriculture, Forestry and Fisheries of Japan.

Landing price of tunas (Main fishing ports in Japan)



\* Includes Southern bluefin tuna.